



Real Estate Services

FOR LEASE



1321 Osos Street

Property Description:

City: San Luis Obispo, CA
Size: 4,268 Square Feet
Rent: Starting at \$1.95/SF NNN
Type: Office

Hank Niezen, broker

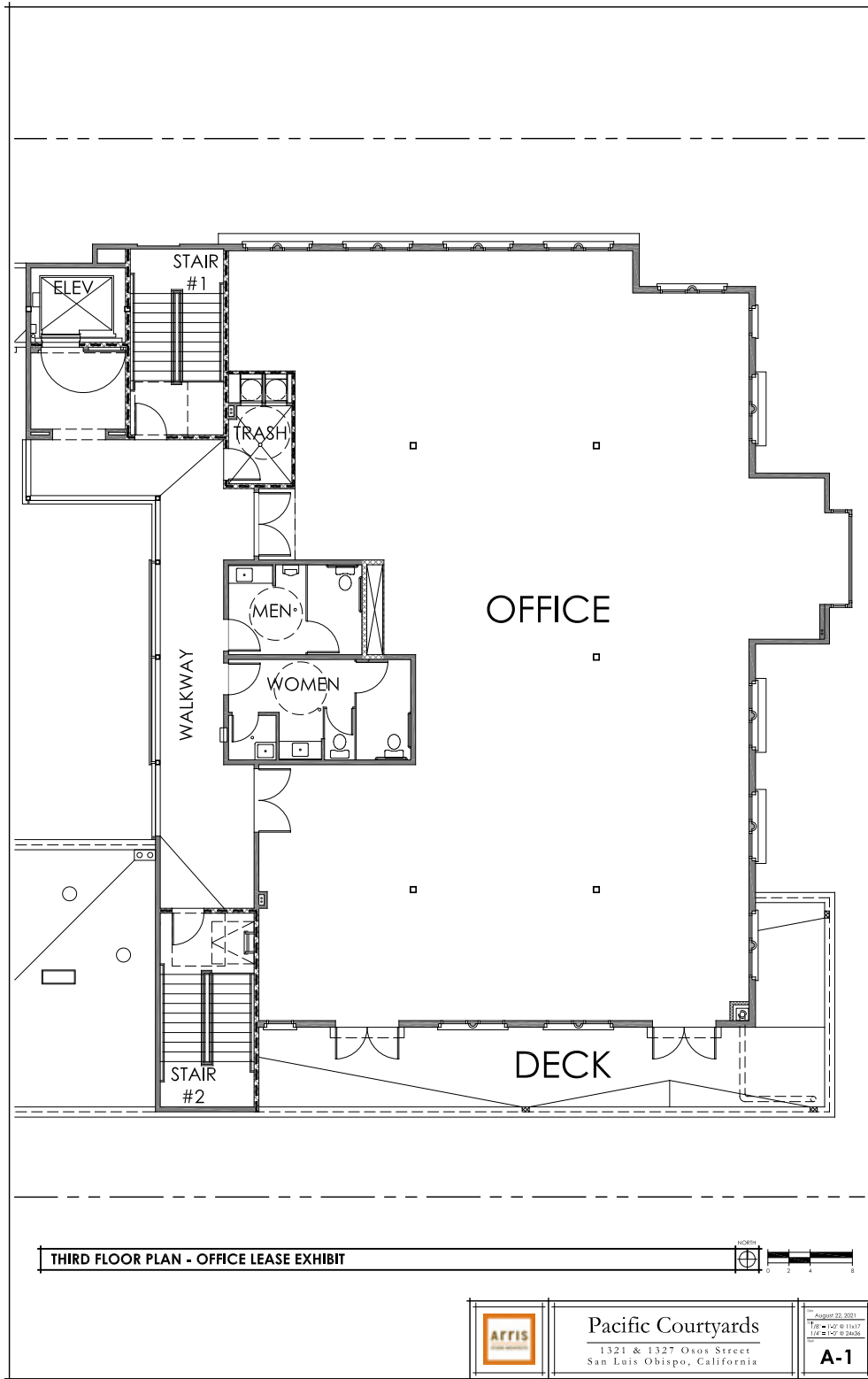
Cell - **805.748.2645**

hniezen@centralcommercialgroup.com

License # 01831075

Overview:

Located in beautiful downtown San Luis Obispo. This newly built premiere office building has a total of 4,268 square feet remaining on the 3rd floor. Currently in a shell condition, this suite can be demised into various sizes and configurations. On-site parking is available, as well as street parking and the nearby Chorro parking structure.



	Pacific Courtyards 1321 & 1327 Osos Street San Luis Obispo, California	<small>August 22, 2021</small> <small>TITLE # 127 0 11417</small> <small>OFF # 127 0 24536</small>
	A-1	

1321 Osos Street



1321 Osos Street

