

# FOR SALE

# 16 Commercial Lots on Earthwood Lane, San Luis Obispo



## PROPERTY CHARACTERISTICS

Located off of Suburban road on the south side of San Luis Obispo, and adjacent to the new Avila Ranch development. 16 individual lots totaling approximately 145,000 square feet SF with all utilities stubbed to each lot. Lot's ranging in size from ~9001 to ~9592 square feet. Zoning is M-SP (Manufacturing-Specific Plan).

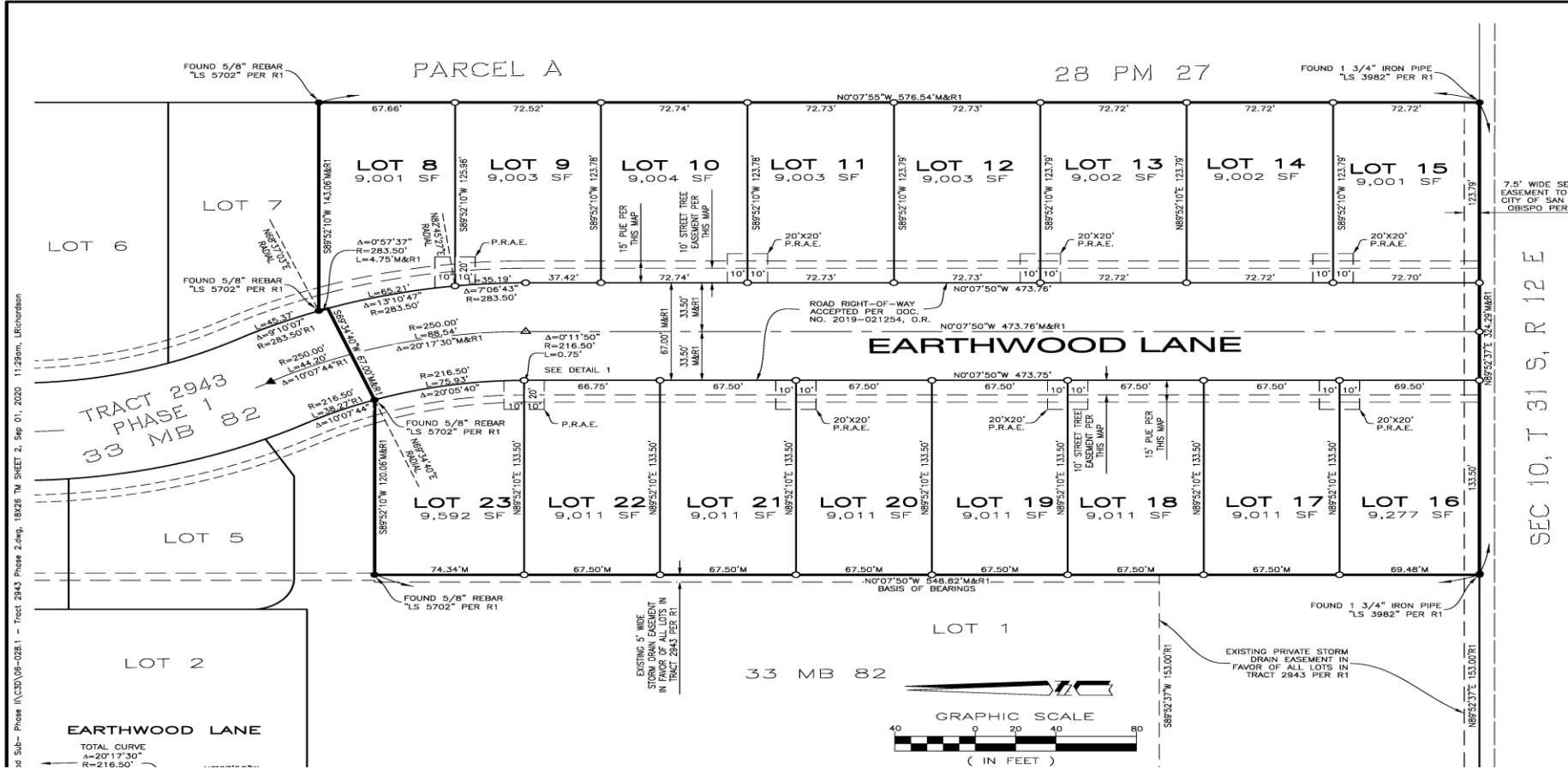
3450 Broad Street, Suite 101  
San Luis Obispo, CA 93401  
805-548-8686  
CentralCommercialGroup.com  
DRE# 01984692



Hank Niezen  
805-748-2645  
hniezen@centralcommercialgroup.com  
DRE# 01831075

# FOR SALE

# 16 Commercial Lots on Earthwood Lane, San Luis Obispo



3450 Broad Street, Suite 101  
 San Luis Obispo, CA 93401  
 805-548-8686  
 CentralCommercialGroup.com  
 DRE# 01984692



Hank Niezen  
 805-748-2645  
 hniezen@centralcommercialgroup.com  
 BRE# 01831075

**FOR  
SALE**

# ***16 Commercial Lots on Earthwood Lane, San Luis Obispo***



3450 Broad Street, Suite 101  
San Luis Obispo, CA 93401  
805-548-8686  
CentralCommercialGroup.com  
DRE# 01984692



Hank Niezen  
805-748-2645  
hniezen@centralcommercialgroup.com  
DRE# 01831075

**FOR  
SALE**

# ***16 Commercial Lots on Earthwood Lane, San Luis Obispo***



3450 Broad Street, Suite 101  
San Luis Obispo, CA 93401  
805-548-8686  
CentralCommercialGroup.com  
DRE# 01984692



Hank Niezen  
805-748-2645  
hniezen@centralcommercialgroup.com  
DRE# 01831075

# FOR SALE

# 16 Commercial Lots on Earthwood Lane, San Luis Obispo



3450 Broad Street, Suite 101  
San Luis Obispo, CA 93401  
805-548-8686  
CentralCommercialGroup.com  
DRE# 01984692



Hank Niezen  
805-748-2645  
hniezen@centralcommercialgroup.com  
DRE# 01831075

# FOR SALE

# 16 Commercial Lots on Earthwood Lane, San Luis Obispo



## AVILA RANCH

The project is a new, primarily residential development with up to 720 dwelling units on a 150-acre site north of Buckley Road, located within the Airport Area Specific Plan (AASP) boundaries. The project also includes 15,000 square feet of neighborhood-serving retail and office uses next to a neighborhood park, as well as the preservation of agricultural uses and open space.



3450 Broad Street, Suite 101  
San Luis Obispo, CA 93401  
805-548-8686  
CentralCommercialGroup.com  
DRE# 01984692



Hank Niesen  
805-748-2645  
hniesen@centralcommercialgroup.com  
BRE# 01831075